

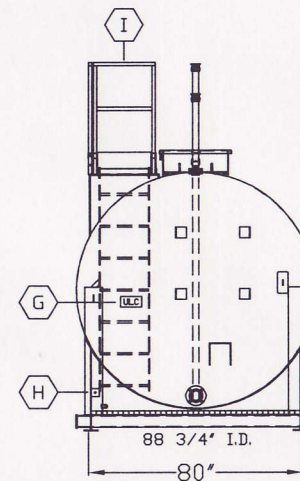
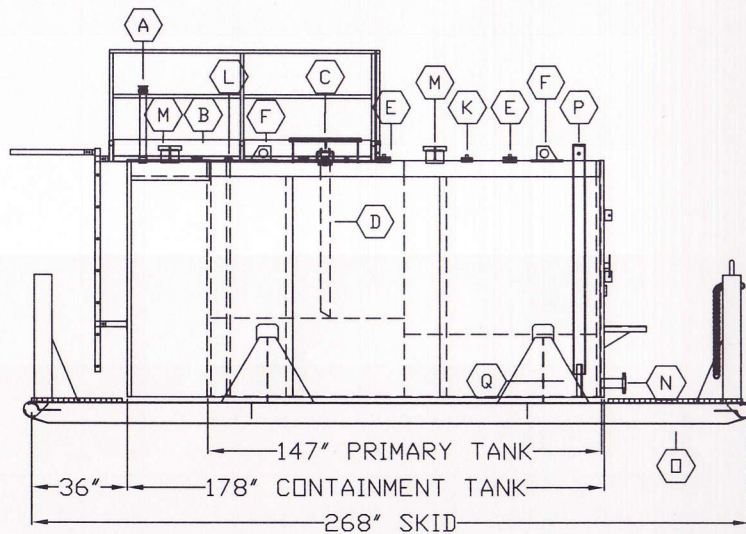
ITEM	DESCRIPTION
A	2" VENT PIPE C/W CAP
B	2" LOCKABLE GAUGE PORT
C	24" Ø LOCKABLE MANWAY c/w 2" FILL
D	3" REMOVABLE DROP TUBE
E	4" SPARE COUP. C/W PLUG
F	LIFT LUG
G	U.L.C. PLATE
H	GROUND LUG
I	ACCESS LADDER & PLATFORM ASSEMBLY
J	STRIKER PLATE
K	3" SPARE COUP. C/W PLUG
L	WATER DRAW ASSEMBLY
M	6" EMERGENCY VENT
N	3" BOTTOM DISCHARGE
O	W8Ø16 STRUCTURAL SKID ASSEMBLY c/w 6" BOLLARDS
P	4 1/2" SPCL PIPE (STP MOUNT)
Q	STP BOTTOM BRACE

**C.A.G.S.T.**

HORIZONTAL FUEL STORAGE TANK  
 MODEL: C.A.G.S.T. - F  
 CAPACITY: 15,000 LITER

**SPECIFICATIONS**

STRUCTURAL PLATE: ASTM A238/A36  
 OR EQUAL  
 TANK: U.L.C. S601-93  
 DYKE: U.L.C. S653-94  
 SANDBLASTING: SSPC 6 PRIOR TO PAINT  
 PAINT: "AMERCOAT" EPOXY COATING  
 TANK COLOR: WHITE  
 STAIR COLOR: BLACK



REV	DESCRIPTION	DATE	APP'D
2	-	-	-
1	SHORTENED SKID LENGTH	SEP 14/06	

TANKS DIRECT			
TITLE:	GENERAL ARRANGEMENT C.A.G.S.T. - F 15,000 L	DWG BY:	CEW DATE: MAY 9, 2006 PROJECT#
		DWG#: E/E/00253	SCALE: NTS SERIAL# C-076 SHEET#: 1/11